



Vlaamse Amateur Vliegtuigbouwers vzw
Vliegveld Malle - EBZR

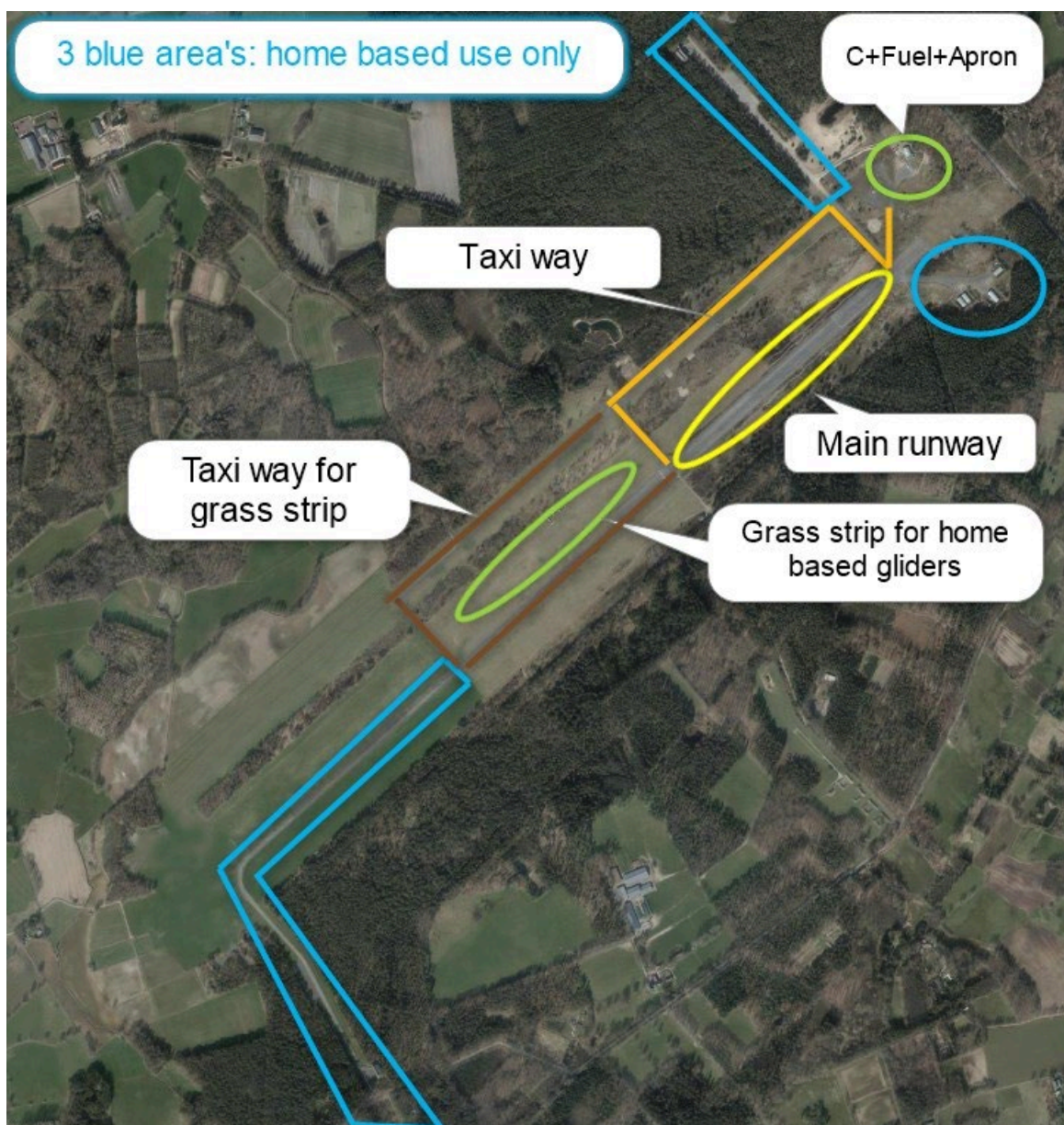
EBZR VISITORS info and taxi instructions

Edition March 2024

1. Background:

Due to concrete removal works, the taxiways at EBZR have a reduced width compared to the previous situation.

This instruction gives you additional info when using/visiting the EBZR field area.



Grass strip is for KAZM home based gliders only and should NOT be used for T&G's.

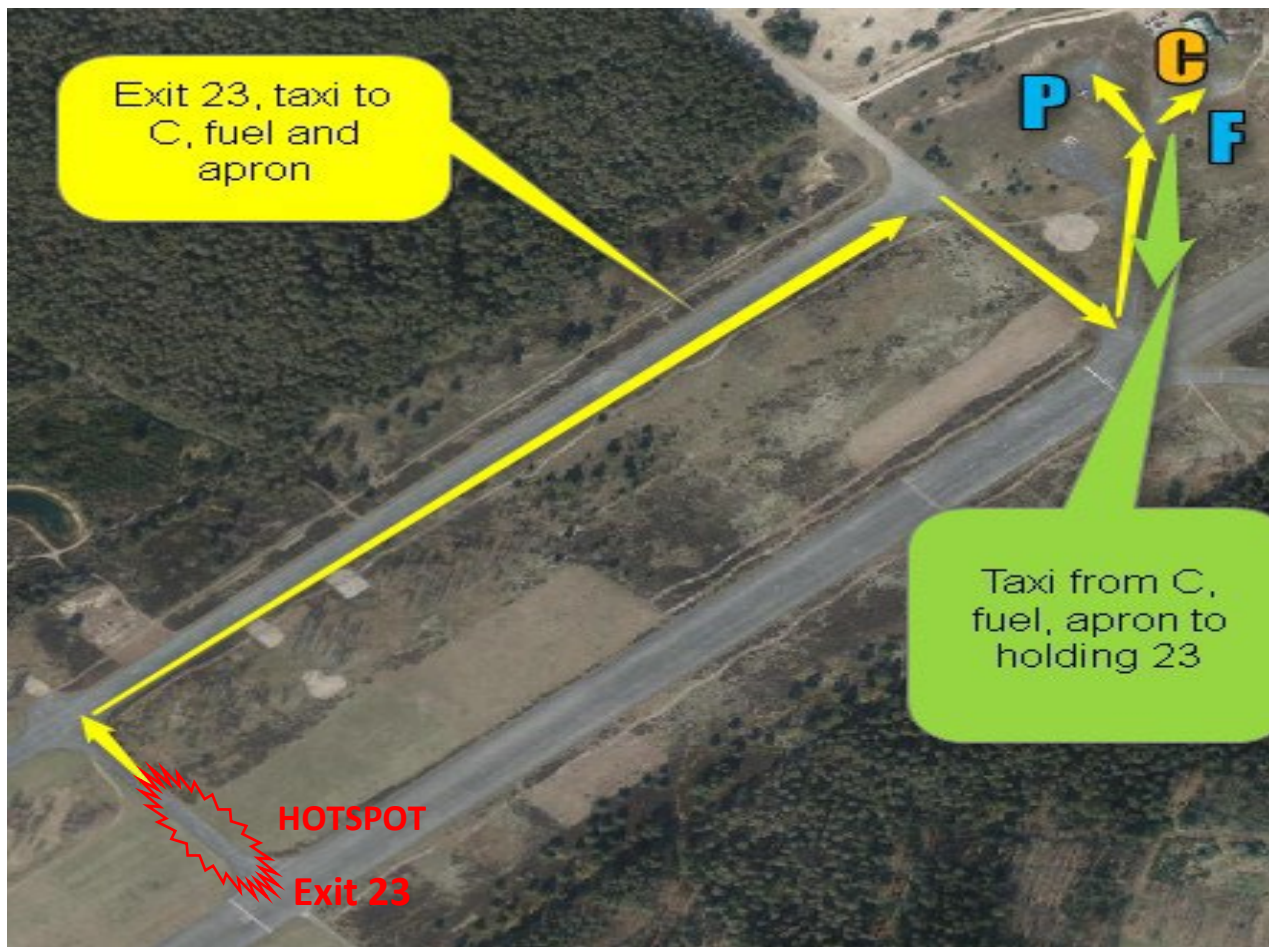
EBZR VISITORS info and taxi instructions

Edition March 2024

2. Runway 23 in use taxi instruction:

DUE TO REDUCED TAXIWAY WIDTH, CROSSING AIRCRAFT IS NOT POSSIBLE!

The grass alongside the taxiway cannot be used. Follow the instructions in the figure below.



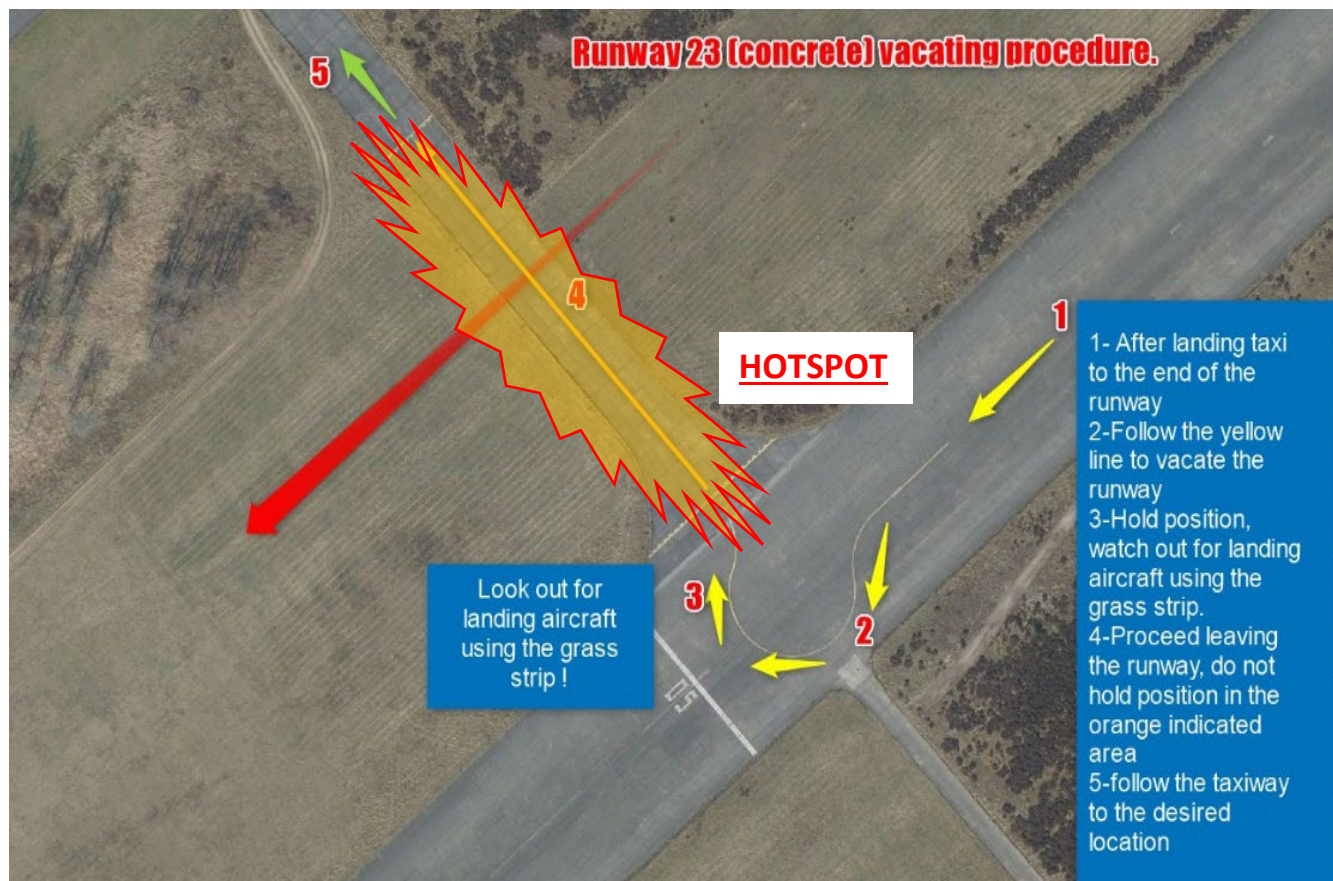
Before vacating RWY23:

Have a sharp LOOKOUT for landing gliders or landing tow plane with cable on the grass strip.

EBZR VISITORS info and taxi instructions

Edition March 2024

3. HOTSPOT when vacating Runway 23:



4. Glider transport: aerodrome temporarily closed

Due to reduced width of the taxiway, gliders will be transported from their hangar to the grass strip over the main runway.

During this transport the aerodrome will be temporarily closed.

Closure of the aerodrome will be announced over Zoersel Radio 123.805Mhz at least 30 minutes before actual closing.

This transport takes approx. 20minutes.

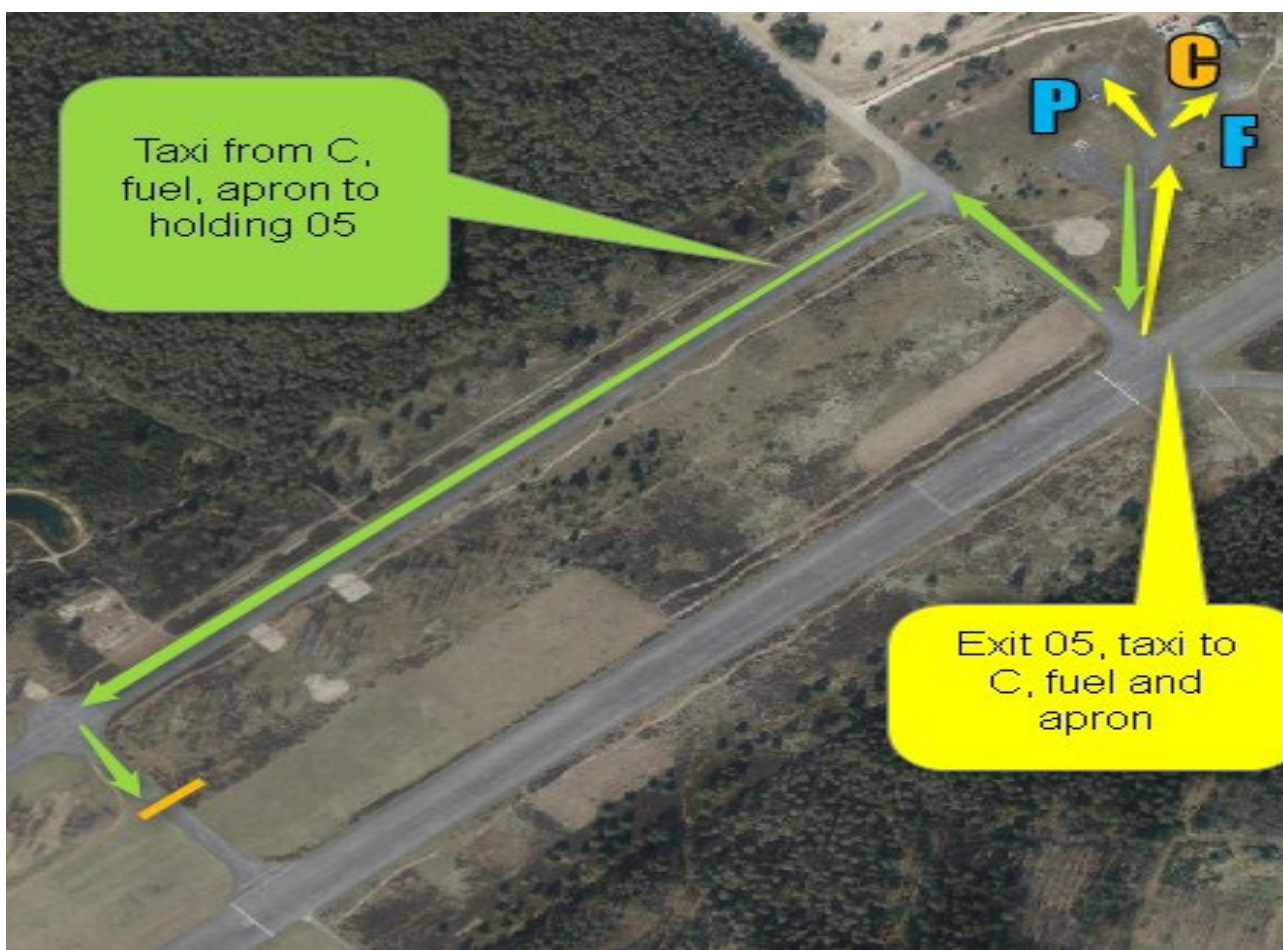
EBZR VISITORS info and taxi instructions

Edition March 2024

5. Runway 05 in use taxi instruction:

DUE TO REDUCED TAXIWAY WIDTH, CROSSING AIRCRAFT IS NOT POSSIBLE!

The grass alongside the taxiway cannot be used. Follow the instructions in the figure below.



Before lining up to RWY05:

Have a sharp LOOKOUT for tow plane with glider taking off from the concrete RWY05.